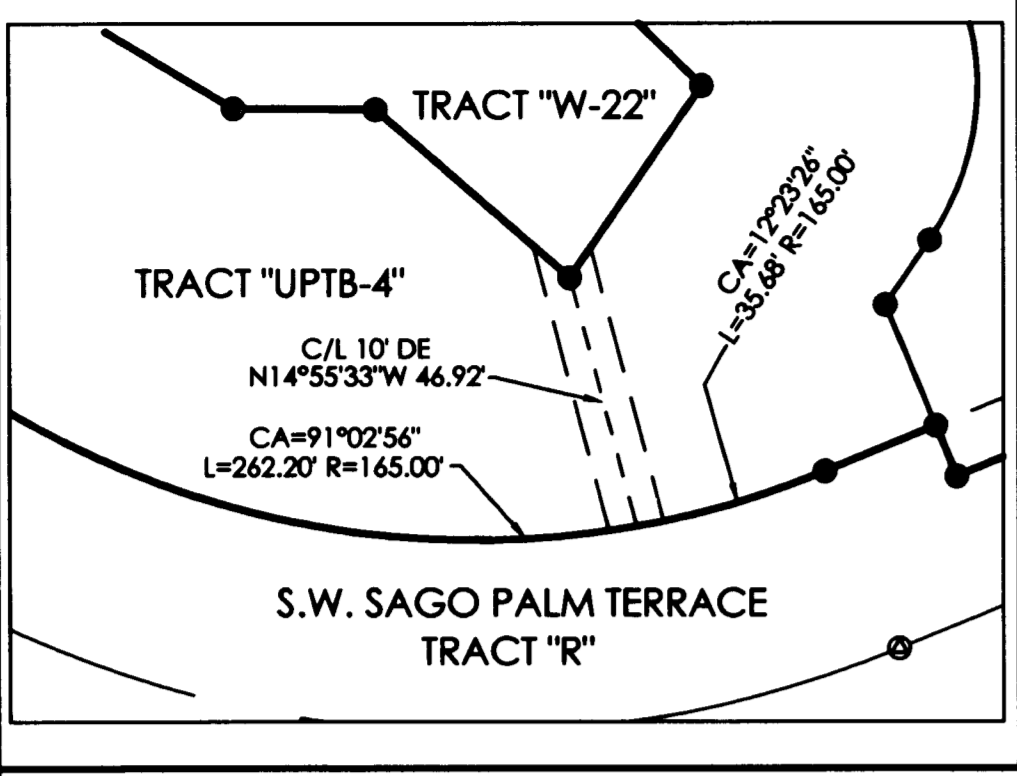


JULY 2006

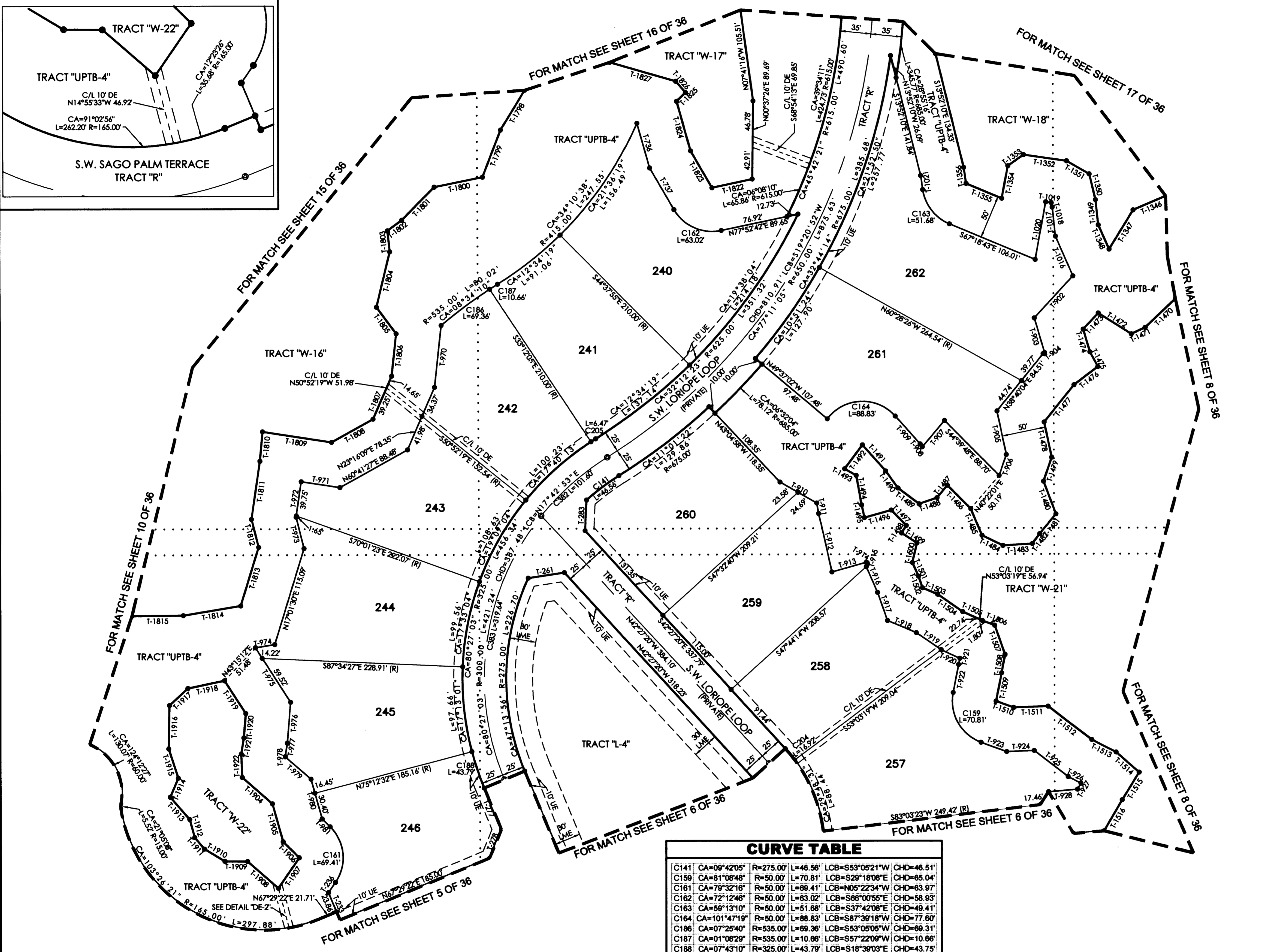
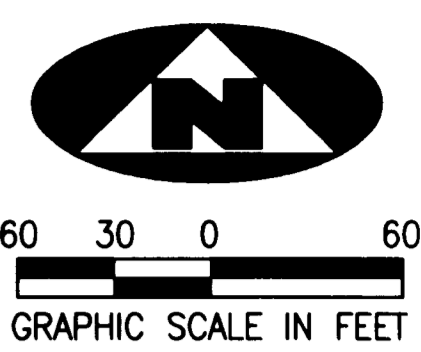
DETAIL "DE-2"



# TUSCAWILLA PUD

BEING A REPLAT OF A PORTION OF SECTIONS 14 AND 15, TOWNSHIP 38 SOUTH, RANGE 40 EAST, PALM CITY FARMS, RECORDED IN PLAT BOOK 6, PAGE 42, PUBLIC RECORDS PALM BEACH COUNTY (NOW MARTIN COUNTY), FLORIDA, AND BEING A PART OF SECTIONS 10 AND 11, TOWNSHIP 38 SOUTH, RANGE 40 EAST, MARTIN COUNTY, FLORIDA

SHEET 9 OF 36  
Plat Book 16 pg 39



### TANGENT TABLE

T-233 522°30'38"E 33.84'	T-1471 N64°22'51"E 17.43'	T-1814 N80°30'22"E 44.45'
T-236 N34°23'34"E 14.23'	T-1472 S57°15'16"E 44.67'	T-1815 N89°19'55"E 58.60'
T-261 S81°07'59"W 41.65'	T-1473 N42°34'41"E 25.38'	T-1822 N77°52'42"E 47.26'
T-283 S02°53'30"W 35.57'	T-1474 N16°23'50"W 27.39'	T-1823 S29°54'32"E 48.85'
T-736 S15°30'05"E 53.12'	T-1475 N27°55'32"W 18.98'	T-1824 S15°30'05"E 59.08'
T-737 S29°54'32"E 55.17'	T-1476 N52°13'46"E 34.31'	T-1825 S45°13'45"W 14.22'
T-902 N42°34'41"E 65.61'	T-1477 N38°40'04"E 54.95'	T-1826 S40°36'34"E 17.17'
T-903 N16°23'50"W 41.62'	T-1478 N11°54'02"W 41.30'	T-1827 S73°44'50"E 78.03'
T-904 N52°13'46"E 65.61'	T-1479 N18°54'33"E 29.05'	T-1904 N49°02'23"W 45.77'
T-905 N11°54'02"W 51.14'	T-1480 N20°36'12"W 40.20'	T-1905 N15°38'34"W 45.02'
T-906 N18°54'33"E 25.33'	T-1481 N39°31'51"E 29.69'	T-1906 N45°08'42"W 26.01'
T-907 N39°46'41"E 39.53'	T-1482 N36°19'13"E 14.11'	T-1907 N34°23'34"E 42.43'
T-908 S35°09'25"E 4.22'	T-1483 N86°23'33"E 33.59'	T-1908 S48°48'29"E 46.64'
T-909 S41°27'02"E 42.70'	T-1484 S63°50'32"E 26.63'	T-1909 S89°33'20"E 25.89'
T-910 N60°03'48"W 48.27'	T-1485 S22°11'16"E 33.18'	T-1910 S58°58'55"E 27.06'
T-911 N10°04'26"W 12.35'	T-1486 S44°39'48"E 37.94'	T-1911 S40°18'09"E 17.43'
T-912 N12°33'04"W 68.97'	T-1487 N39°46'41"E 18.54'	T-1912 S15°22'28"E 21.42'
T-913 S74°12'45"W 40.67'	T-1488 N70°29'18"E 21.61'	T-1913 S41°09'56"E 33.65'
T-914 N57°13'57"W 1.19'	T-1489 S52°55'09"E 30.29'	T-1914 S22°55'12"W 23.57'
T-915 N13°26'02"E 4.54'	T-1490 S35°09'25"E 23.94'	T-1915 S18°06'41"E 35.13'
T-916 N23°44'15"W 32.15'	T-1491 S41°27'02"E 39.95'	T-1916 S01°00'34"W 49.60'
T-917 N19°19'43"W 34.11'	T-1492 N36°45'39"E 34.12'	T-1917 S47°24'30"W 28.70'
T-918 N45°58'50"W 35.54'	T-1493 N60°03'48"W 15.24'	T-1918 S78°16'53"W 42.65'
T-919 N55°14'11"W 34.31'	T-1494 N10°04'26"W 34.58'	T-1919 N32°59'27"W 44.44'
T-920 N65°31'37"W 23.54'	T-1495 N12°33'04"W 14.98'	T-1920 N04°42'44"E 27.98'
T-921 N10°31'56"E 7.30'	T-1496 S74°12'45"W 31.72'	T-1921 N08°48'23"E 18.75'
T-922 N11°16'15"E 32.43'	T-1497 N43°42'57"W 24.49'	T-1922 N02°15'24"W 26.55'
T-923 N69°52'32"W 31.14'	T-1498 N31°47'55"E 10.32'	
T-924 S87°48'27"W 31.33'	T-1499 S57°13'57"W 21.03'	
T-925 N52°39'17"W 49.09'	T-1500 N13°26'02"E 23.17'	
T-926 N62°36'40"W 16.35'	T-1501 N23°44'15"W 17.26'	
T-927 N30°07'53"E 7.89'	T-1502 N19°19'43"W 13.96'	
T-970 N06°10'09"E 71.68'	T-1503 N64°58'50"W 18.70'	
T-971 S81°18'58"E 44.72'	T-1504 S55°14'11"W 34.95'	
T-972 N08°20'04"E 41.39'	T-1505 N65°31'37"W 24.54'	
T-973 N14°01'33"W 37.26'	T-1506 N68°48'03"W 15.16'	
T-974 N80°30'22"E 22.41'	T-1507 N19°28'01"W 35.43'	
T-975 N32°59'27"W 73.75'	T-1508 N10°31'56"E 21.33'	
T-976 N04°42'44"E 46.84'	T-1509 N11°16'15"E 32.75'	
T-977 N08°48'23"E 15.69'	T-1510 N69°52'32"W 21.28'	
T-978 N02°15'24"W 0.08'	T-1511 S87°48'27"W 39.44'	
T-979 N49°02'23"W 39.14'	T-1512 N52°39'17"W 62.71'	
T-980 N15°38'34"W 46.85'	T-1513 N62°36'40"W 31.09'	
T-981 N45°08'42"W 12.85'	T-1514 N48°40'02"W 35.08'	
T-1016 S23°44'06"E 49.78'	T-1515 N31°50'31"E 36.76'	
T-1017 S06°09'17"E 53.41'	T-1798 N31°01'34"E 53.11'	
T-1018 S13°19'56"E 52.26'	T-1799 N21°01'41"E 58.02'	
T-1019 S81°50'50"E 52.31'	T-1800 N78°23'01"E 56.20'	
T-1020 N10°31'59"E 47.05'	T-1801 N44°34'35"E 53.04'	
T-1021 S08°05'33"E 16.26'	T-1802 N53°03'16"E 20.31'	
T-1346 N46°46'56"E 40.53'	T-1803 N04°08'29"W 24.20'	
T-1347 N31°25'43"E 52.60'	T-1804 N13°22'27"E 65.54'	
T-1348 S23°44'06"E 30.43'	T-1805 N34°12'07"W 37.98'	
T-1349 S06°09'17"E 28.82'	T-1806 N04°10'09"E 49.10'	
T-1350 S13°19'56"E 30.42'	T-1807 N23°16'09"E 53.90'	
T-1351 S59°47'15"E 29.79'	T-1808 N60°41'27"E 54.33'	
T-1352 S81°50'50"E 49.80'	T-1809 S81°18'58"E 79.67'	
T-1353 N54°46'15"E 21.94'	T-1810 N05°11'22"E 33.98'	
T-1354 N10°31'59"E 38.02'	T-1811 N08°20'04"E 67.67'	
T-1355 S67°18'43"E 44.09'	T-1812 N14°01'33"W 33.25'	
T-1356 S08°05'33"E 18.79'	T-1813 N17°01'30"E 70.27'	
T-1470 N46°17'59"E 47.90'		

### CURVE TABLE

C141	CA=08°42'05"	R=275.00'	L=46.56'	LCB=S53°05'21"W	CHD=46.51'
C159	CA=81°08'48"	R=50.00'	L=70.81'	LCB=S29°18'08"E	CHD=65.04'
C161	CA=79°32'16"	R=50.00'	L=69.41'	LCB=N05°22'34"W	CHD=63.97'
C162	CA=72°12'46"	R=50.00'	L=63.02'	LCB=S68°00'55"E	CHD=58.93'
C163	CA=58°13'10"	R=50.00'	L=51.68'	LCB=S37°42'08"E	CHD=49.41'
C164	CA=101°47'19"	R=50.00'	L=88.83'	LCB=S87°39'18"W	CHD=77.80'
C186	CA=07°25'40"	R=535.00'	L=89.36'	LCB=S53°05'05"W	CHD=89.31'
C187	CA=01°08'28"	R=535.00'	L=10.86'	LCB=S57°22'09"W	CHD=10.86'
C188	CA=07°43'10"	R=325.00'	L=43.79'	LCB=S18°38'03"E	CHD=43.75'
C204	CA=05°42'12"	R=170.00'	L=16.92'	LCB=N38°36'14"W	CHD=16.91'
C205	CA=01°08'28"	R=325.00'	L=6.47'	LCB=S57°22'09"W	CHD=6.47'

### LEGEND

(R)	DENOTES A RADIAL LINE	R	DENOTES RADIUS DISTANCE
C/L	DENOTES A CENTERLINE	L	DENOTES ARC LENGTH DISTANCE
DE	DENOTES A PRIVATE DRAINAGE EASEMENT	CA	DENOTES CENTRAL ANGLE
UE	DENOTES UTILITY EASEMENT	LCB	DENOTES LONG CHORD BEARING
LSE	DENOTES LIFT STATION EASEMENT	CHD	DENOTES CHORD DISTANCE
MCAE	DENOTES MARTIN COUNTY ACCESS EASEMENT	ORB	DENOTES OFFICIAL RECORDS BOOK
FM	DENOTES FOREMAN EASEMENT	.....	DENOTES TRACT LINE OF THE PLAT OF PALM CITY FARMS PLAT BOOK 6, PAGE 42.
LME	DENOTES LAKE MAINTENANCE EASEMENT	□	DENOTES A SET PERMANENT REFERENCE MONUMENT 4"x4" CONCRETE MONUMENT WITH DISK (LB 7344) (LB 7344)
		●	DENOTES A 5/8" IRON ROD AND CAP (LB 7344)
		⊙	DENOTES A SET PERMANENT CONTROL POINT CARRIAGE BOLT AND WASHER (LB 7344)
		⊙	DENOTES A FOUND PERMANENT CONTROL POINT CARRIAGE BOLT AND WASHER

### SURVEYOR'S NOTES

- THE BASE BEARING, AS SHOWN HEREON, IS N89°58'48"W ALONG THE SOUTHLINE OF THE SOUTHWEST ONE-QUARTER OF SECTION 15, TOWNSHIP 38 SOUTH, RANGE 40 EAST.
- IN THOSE INSTANCES WHERE UTILITY OR DRAINAGE STRUCTURES ARE CONSTRUCTED IN CONFLICT WITH THE PLATTED PERMANENT CONTROL POINT POSITION STRADDLERS MONUMENTED AS PERMANENT CONTROL POINTS WILL BE SET TO REFERENCE THE PLATTED POSITION.
- ALL LINES THAT INTERSECT CURVES ARE RADIAL UNLESS OTHERWISE NOTED.
- THIS INSTRUMENT WAS PREPARED BY WM. R. VAN CAMPEN, PROFESSIONAL SURVEYOR AND MAPPER NO. 2424, IN AND FOR THE OFFICES OF ASSOCIATED LAND SURVEYORS, INC., 4152 WEST BLUE HERON BOULEVARD, SUITE 121, RIVIERA BEACH, FLORIDA, 33404



**ASSOCIATED LAND SURVEYORS, INC.**  
4152 W. BLUE HERON BOULEVARD—SUITE 121  
RIVIERA BEACH, FLORIDA 33404 LB 7344  
PHONE: (561) 848-2102 FAX: (561) 844-9859 EMAIL: ALSURVEY@AOL.COM

FILE: P280PLAT

FB:	WO.NO.: P280
SCALE: 1"=80'	DATE: 1/8/2005
DWN: KVC	SHEET 9 OF 36

